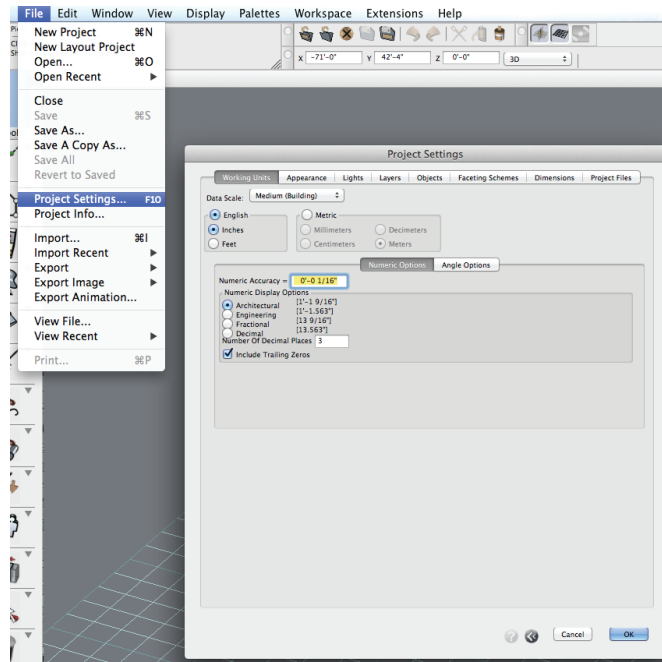


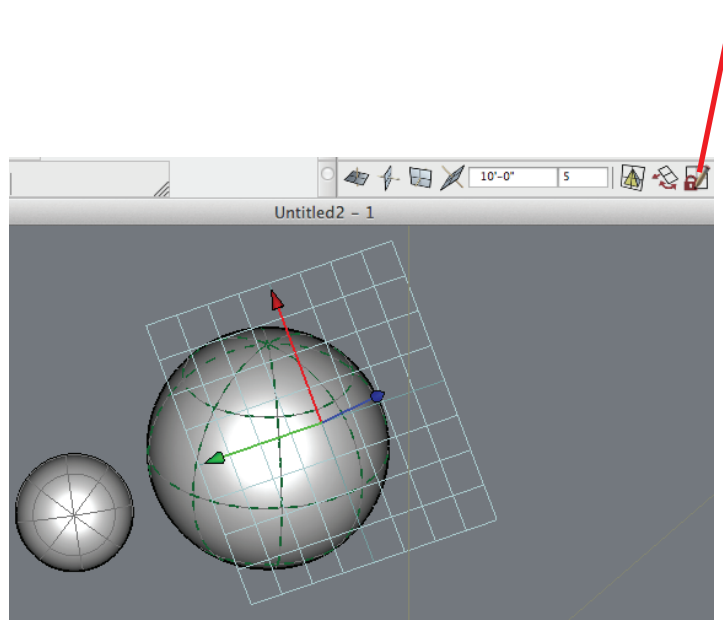
Transitioning from FormZ 6.7 to FormZ 7

My personal saga. Tips on making V7 a little more like V6..... because I formed many V6 habits.

1. New **Project Settings** under the file menu consolidates many settings into one window. For example, project colors used to be under the options menu.



2. The New **model on object** can be turned off by clicking on the Red Lock Icon.

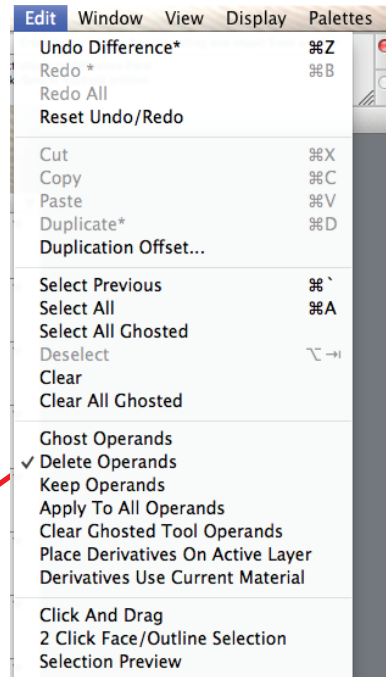


Check out the Intuition set of predefined materials now for FormZ 7 and Bonzai 3.
intuitionusa.com/materials

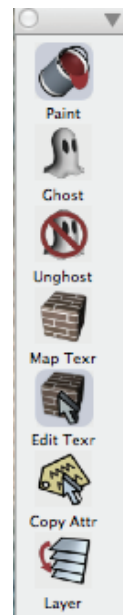


9. **Ghosting.** If you don't want ghosted objects after an operation, make sure the Delete Operands is checked.

If you want them make sure Ghost Operands is checked.

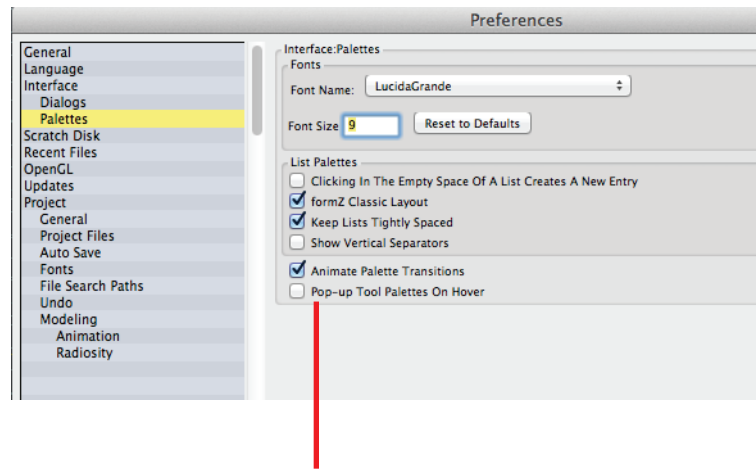


9. **Texture Mapping** is a different animal in V7. If you want one map on a plane use the new billboard tool. I now use the Map Texr and Edit Texr tools alot to align the map and then move it.

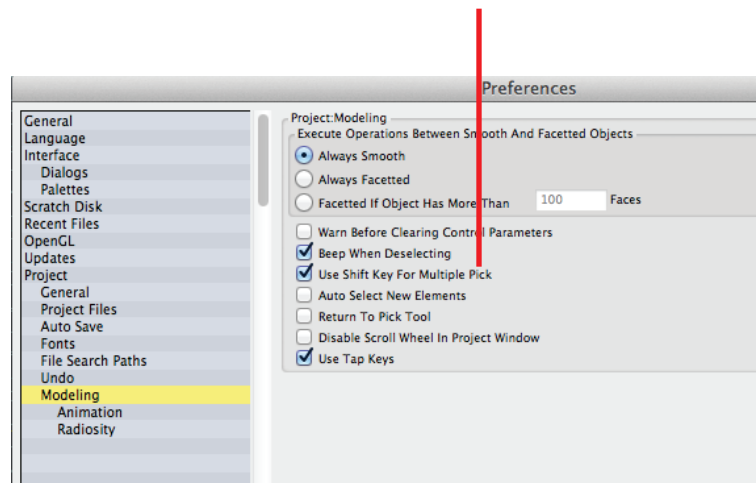


3. Turn **off** Pop-up Tool Palettes on Hover. Can just click on an icon and the Tool Palette opens... like V6.

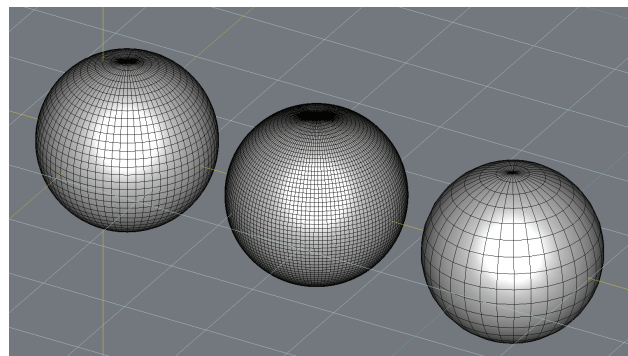
3a. Turn on FormZ Classic Layout and Keep lists Tightly Spaced makes the palettes closer to V6.



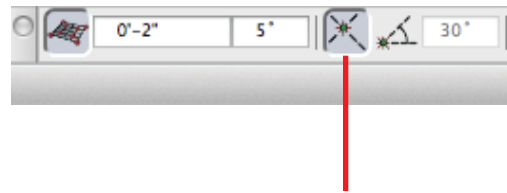
4. Can go back to the V6 way of **selecting multiple objects** by just clicking on them by turning off this button. I eventually got used to holding down the shift key for this.



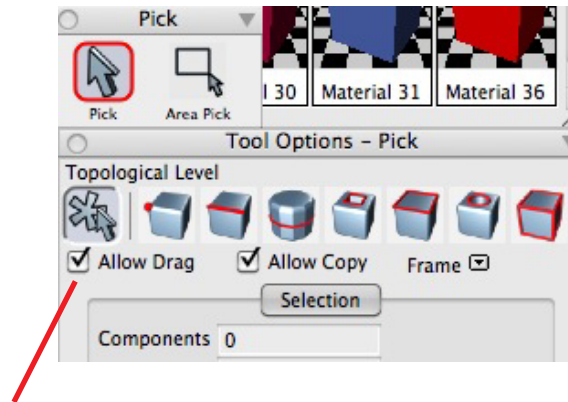
5. In V7 you have to model in **Smooth mode** and not in Polygonal mode. You can convert the Smooth model to polygons later using the convert tool and control the density with the display resolution.



6. The **Ortho Snap** tool now looks like this. It works a little differently.



7. Turn off **Allow Drag**. Having it on allows you to move an object after just selecting it. My V6 habit is to always use the move tool to move.



8. When copy moving, turn on the **Return to Self After Copy**. V6 has that teal icon that you could always see. You can't see that in V7 so it is better for it to go back to not make a copy.

